

**Applicant/PHCR:** *Innovata Pharmaceuticals (Pty) Ltd*

**Product Proprietary Name:** PAINOGESIC CO

**Dosage Form & Strength:** *Film Coated Tablet, Tramadol HCl 37,5 mg & Paracetamol 325 mg*

Application name (number): PAINOGESIC CO

### 1.3.1.1 Professional Information for Medicines for Human Use

#### SCHEDULING STATUS

**S5**

#### 1. NAME OF THE MEDICINE

**PAINOGESIC CO 37.5 mg/325 mg** film-coated tablets

#### 2. QUALITATIVE AND QUANTITATIVE COMPOSITION

##### **PAINOGESIC CO:**

Each film-coated tablet contains 37,5mg tramadol hydrochloride and 325 mg paracetamol.

Sugar Free

Contains: Sodium 0.035 mmol

For a full list of excipients, see section 6.1

#### 3. PHARMACEUTICAL FORM

White to off-white, round, biconvex film coated tablet plain on both surfaces.

#### 4. CLINICAL PARTICULARS

##### 4.1. Therapeutic indications

**PAINOGESIC CO** is indicated for the management of moderate to moderately severe pain in adults.

**PAINOGESIC CO** is not recommended for minor pain that may be treated adequately through lesser means.

##### 4.2. Posology and method of administration

###### **Posology**

To be used in adults and children over 16 years of age. DO NOT EXCEED THE RECOMMENDED DOSE.

###### **Adults:**

**Applicant/PHCR:** Innovata Pharmaceuticals (Pty) Ltd

**Product Proprietary Name:** PAINOGESIC CO

**Dosage Form & Strength:** Film Coated Tablet, Tramadol HCl 37,5 mg & Paracetamol 325 mg

Application name (number): PAINOGESIC CO

For the management of pain, the recommended dose of **PAINOGESIC CO** is 1 or 2 tablets every 4 to 6 hours as needed for pain relief up to a maximum of 8 tablets per day.

as with all analgesic medicines, a titration period of several days with gradual dose increases at the initiation of **PAINOGESIC CO** therapy may be beneficial for some patients.

clinical studies with tramadol in patients with moderate to moderately severe chronic pain indicated that the tolerability of tramadol can be improved by starting at a lower dose with gradual upward titration to reach doses that provide sufficient pain relief.

### Special populations

#### Renal impairment:

For patients with creatinine clearance < 30 ml/min, the dosing interval of **PAINOGESIC CO** should be increased not to exceed 2 tablets every 12 hours.

### Method of administration

For oral use

Tablets must be swallowed whole, with a sufficient quantity of liquid. they must not be broken or chewed

### 4.3. Contraindications

- **PAINOGESIC CO** is contraindicated in patients with a known hypersensitivity to tramadol, paracetamol, or any of the other ingredients mentioned in section 6.1 or other opioids such as codeine.
- **PAINOGESIC CO** is also contraindicated in cases of severe liver function impairment and in acute intoxication with alcohol, hypnotics, centrally acting analgesics, opioids or psychotropic medicines.
- **PAINOGESIC CO** should not be administered to patients who are receiving monoamine oxidase inhibitors or within two weeks of their withdrawal.

**Applicant/PHCR:** *Innovata Pharmaceuticals (Pty) Ltd*

**Product Proprietary Name:** PAINOGESIC CO

**Dosage Form & Strength:** *Film Coated Tablet, Tramadol HCl 37,5 mg & Paracetamol 325 mg*

Application name (number): PAINOGESIC CO

- **PAINOGESIC CO** must not be used for narcotic withdrawal treatment.
- **PAINOGESIC CO** should not be given to patients with respiratory depression especially in the presence of cyanosis and excessive bronchial secretions.
- **PAINOGESIC CO** should not be given to patients with increased intracranial pressure or central nervous system depression due to head injury or cerebral disease
- **PAINOGESIC CO** is contraindicated in epilepsy not controlled by treatment

#### **4.4. Special warnings and precautions for use**

**The maximum dose of 8 tablets of Tramadol hydrochloride/Paracetamol should not be exceeded. In order to avoid inadvertent overdose, patients should be advised not to exceed the recommended dose and not to use any other paracetamol (including over the counter) or tramadol hydrochloride containing products concurrently without the advice of a medical practitioner. (See section 4.9)**

**In the event of overdose or suspected overdose and notwithstanding the fact that the person may be asymptomatic, the nearest doctor, hospital or Poison Centre must be contacted immediately.**

Dosages in excess of those recommended may cause severe liver damage. Patients suffering from liver or kidney disease should take paracetamol containing products under medical supervision.

Tramadol may only be taken with special care in opioid dependence, reduced level of consciousness of uncertain origin, disorders of the respiratory function and increased intracranial pressure.

#### **Seizures:**

**Applicant/PHCR:** *Innovata Pharmaceuticals (Pty) Ltd*

**Product Proprietary Name:** PAINOGESIC CO

**Dosage Form & Strength:** *Film Coated Tablet, Tramadol HCl 37,5 mg & Paracetamol 325 mg*

Application name (number): PAINOGESIC CO

Seizures have been reported in patients receiving tramadol at dosages within the recommended dosage range. The risk of seizures is enhanced in patients exceeding the recommended dose, or in patients taking tricyclic anti-depressants or other tricyclic compounds e.g. promethazine, selective serotonin re-uptake inhibitors, MAO-inhibitors and neuroleptics. The risk of seizures may also be increased in patients with epilepsy, with a history of seizures or in patients with a recognised risk for seizures e.g. drug and alcohol withdrawal, intracranial infections, head trauma, metabolic disorders and naloxone administration with tramadol overdose. Patients known to suffer from cerebral convulsions should be carefully monitored during treatment with tramadol.

#### **CYP2D6 ultra-rapid metabolism of tramadol:**

Patients who are CYP2D6 ultra-rapid metabolisers may convert tramadol to its active metabolite (M1) more rapidly and completely than other patients. This rapid conversion may lead to higher than expected serum M1 levels which could lead to an increased risk of respiratory depression. Alternative medicine, dose reduction and/or increased monitoring for signs of tramadol overdose, such as respiratory depression is recommended in patients known to be CYP2D6 ultra-rapid metabolisers.

#### **Drug Abuse and Dependence:**

Tramadol has a dependence potential and tolerance, psychic and physical dependence of the morphine- type ( $\mu$  opioid) may develop with long-term use. The medicine has been associated with craving, drug- seeking behaviour and tolerance development. Cases of abuse and dependence on tramadol have been reported. Tramadol should not be used in opioid-dependent patients. Tramadol can reinstate physical dependence in patients that have been previously dependent or chronically using other opioids. In patients with a tendency to drug abuse, a history of drug dependence or who are chronically using opioids, treatment with tramadol is not recommended.

**Applicant/PHCR:** *Innovata Pharmaceuticals (Pty) Ltd*

**Product Proprietary Name:** PAINOGESIC CO

**Dosage Form & Strength:** *Film Coated Tablet, Tramadol HCl 37,5 mg & Paracetamol 325 mg*

Application name (number): PAINOGESIC CO

### **Withdrawal:**

Withdrawal symptoms may occur if **PAINOGESIC CO** is discontinued abruptly. Panic attacks, severe anxiety, hallucinations, paraesthesia, tinnitus, and unusual CNS symptoms have also been reported with abrupt discontinuation of tramadol hydrochloride. Clinical experience suggests that withdrawal symptoms may be relieved by tapering the medicine.

### **Serious skin reactions:**

Serious skin reactions such as acute generalised exanthematous pustulosis (AGEP), Stevens-Johnson syndrome (SJS) and toxic epidermal necrolysis (TEN), have been reported in patients receiving paracetamol. Patients should be informed about the signs of serious skin reactions and use of **PAINOGESIC CO** should be discontinued at the first appearance of skin rash or any other sign of hypersensitivity.

### **Precautions – general:**

Do not co-administer **PAINOGESIC CO** with other tramadol or paracetamol containing products.

### **Use with alcohol:**

**PAINOGESIC CO** should not be taken with alcohol containing beverages.

Use with CNS depressants:

The administration of **PAINOGESIC CO** concurrently with central nervous system (CNS) depressants such as alcohol, opioids, anaesthetic medicines, phenothiazines, tranquilisers or sedative hypnotics is likely to intensify and prolong CNS effects.

### **Use in renal disease:**

**PAINOGESIC CO** should be used with caution in patients with impaired renal function and in patients prone to convulsive disorders or in shock.

### **Hyponatraemia:**

**Applicant/PHCR:** Innovata Pharmaceuticals (Pty) Ltd

**Product Proprietary Name:** PAINOGESIC CO

**Dosage Form & Strength:** Film Coated Tablet, Tramadol HCl 37,5 mg & Paracetamol 325 mg

Application name (number): PAINOGESIC CO

Hyponatraemia has been reported with the use of **PAINOGESIC CO** usually in patients with predisposing risk factors, such as elderly patients and/or patients using concomitant medicines that may cause hyponatraemia. This hyponatraemia appeared to be the result of the syndrome of inappropriate antidiuretic hormone secretion (SIADH) and resolved with discontinuation of **PAINOGESIC CO** and appropriate treatment (e.g. fluid restriction). During **PAINOGESIC CO** treatment, monitoring for signs and symptoms of hyponatraemia is recommended for patients with predisposing risk factors.

### **Sleep-related breathing disorders**

Opioids can cause sleep-related breathing disorders including central sleep apnoea (CSA) and sleep-related hypoxemia. Opioid use increases the risk of CSA in a dose-dependent fashion. In patients who present with CSA, consider decreasing the total opioid dosage.

### **Severe cutaneous adverse reactions**

Severe cutaneous adverse reactions (SCARs) such as toxic epidermal necrolysis (TEN), Steven-Johnson syndrome (SJS), acute generalized exanthematous pustulosis (AGEP), eosinophilia and systemic (DRESS)/Drug-induced hypersensitivity syndrome (DIHS) and fixed drug eruptions (FDE) have been reported in patients treated with paracetamol containing medicines. If a patient develops SCAR, treatment with **PAINOGESIC CO** must immediately be discontinued and appropriate treatment instituted.

## **4.5 Interaction with other medicines and other forms of interaction**

*Concomitant use is contraindicated with:*

Monoamine oxidase (MAO) Inhibitors

- Risk of serotonergic syndrome: diarrhoea, tachycardia, hyperhidrosis, trembling, confusional state, even coma.

**Applicant/PHCR:** Innovata Pharmaceuticals (Pty) Ltd

**Product Proprietary Name:** PAINOGESIC CO

**Dosage Form & Strength:** Film Coated Tablet, Tramadol HCl 37,5 mg & Paracetamol 325 mg

Application name (number): PAINOGESIC CO

In case of recent treatment with MAO inhibitors, a delay of two weeks should occur before treatment with tramadol.

*Concomitant use is not recommended with:*

Alcohol

- Alcohol increases the sedative effect of opioid analgesics. The effect on alertness can make driving of vehicles and the use of machines dangerous. Avoid intake of alcoholic drinks and of medicinal products containing alcohol.

Carbamazepine and other enzyme inducers

- Risk of reduced efficacy and shorter duration due to decreased plasma concentrations of tramadol.

Opioid agonists-antagonists (buprenorphine, nalbuphine, pentazocine)

- Decrease of the analgesic effect by competitive blocking effect at the receptors, with the risk of occurrence of withdrawal syndrome.

*Concomitant use which needs to be taken into consideration:*

- Tramadol can induce convulsions and increase the potential for selective serotonin reuptake inhibitors (SSRIs), serotonin-norepinephrine reuptake inhibitors (SNRIs), tricyclic antidepressants, antipsychotics and seizure threshold-lowering medicinal products (such as bupropion, mirtazapine, tetrahydrocannabinol) to cause convulsions.
- Concomitant therapeutic use of tramadol and serotonergic medicines—such as selective serotonin re-uptake inhibitors (SSRIs) serotonin-norepinephrine reuptake inhibitors (SNRIs), MAO inhibitors (see section 4.2), tricyclic antidepressants and mirtazapine may cause serotonin toxicity.
- Serotonin Syndrome is likely when one of the following is observed:
  - Spontaneous clonus

**Applicant/PHCR:** Innovata Pharmaceuticals (Pty) Ltd

**Product Proprietary Name:** PAINOGESIC CO

**Dosage Form & Strength:** Film Coated Tablet, Tramadol HCl 37,5 mg & Paracetamol 325 mg

Application name (number): PAINOGESIC CO

- Inducible or ocular clonus with agitation or diaphoresis ,
- Tremor and hyperreflexia
- Hypertonia and body temperature > 38 °C and inducible or ocular clonus.

Withdrawal of the serotonergic medicines usually brings about a rapid improvement.

Treatment depends on the type and severity of the symptoms.

- Other opioid derivatives (including antitussive medicines and substitutive treatments)

Increased risk of respiratory depression which can be fatal in cases of overdose.

- Other central nervous system depressants, such as other opioid derivatives (including antitussive medicines and substitutive treatments), other anxiolytics, hypnotics, sedative antidepressants, sedative antihistamines, neuroleptics, centrally-acting antihypertensive medicines, thalidomide and baclofen.

These medicines can cause increased central depression. The effect on alertness can make driving of vehicles and the use of machines dangerous.

- Sedating medicinal products such as benzodiazepines or related substances:
  - The concomitant use of opioids with sedative medicines such as benzodiazepines or related medicines increases the risk of sedation, respiratory depression, coma and death because of additive CNS depressant effects. The dose and duration of the concomitant use should be limited (see section 4.4).
- As medically appropriate, periodic evaluation of prothrombin time should be performed when tramadol hydrochloride/paracetamol and warfarin -like compounds are administered concurrently due to reports of increased INR.

Post- marketing surveillance of tramadol has revealed rare reports of digoxin toxicity.

Concomitant administration of diflunisal and paracetamol produces a 50 % increase in paracetamol plasma levels in normal volunteers. **PAINOGESIC CO** should be used cautiously and patients should be monitored carefully.

**Applicant/PHCR:** Innovata Pharmaceuticals (Pty) Ltd

**Product Proprietary Name:** PAINOGESIC CO

**Dosage Form & Strength:** Film Coated Tablet, Tramadol HCl 37,5 mg & Paracetamol 325 mg

Application name (number): PAINOGESIC CO

Concomitant administration with inhibitors of CYP2D6 such as fluoxetine, paroxetine, quinidine and amitriptyline may inhibit the metabolism of **PAINOGESIC CO**.

Ondansetron increased the requirement of tramadol in patients with post-operative pain.

#### **4.6 Fertility, pregnancy and lactation**

Safe use in pregnancy and lactation has not been established. **PAINOGESIC CO** is not recommended for pregnant mothers because tramadol has been shown to cross the placenta

##### *Fertility*

Post marketing surveillance does not suggest an effect of tramadol on fertility

#### **4.7 Effects on ability to drive and use machines**

Tramadol may cause drowsiness or dizziness, which may be enhanced by alcohol or other CNS depressants. If affected, the patient should not drive or operate machinery.

**PAINOGESIC CO** can impair cognitive function and can affect a patient's ability to drive safely. When prescribing this medicine, patients should be told that **PAINOGESIC CO** is likely to affect your ability to drive. Patients should be told to not drive until they know how **PAINOGESIC CO** affects them.

#### **4.8 Undesirable effects**

**Applicant/PHCR:** Innovata Pharmaceuticals (Pty) Ltd

**Product Proprietary Name:** PAINOGESIC CO

**Dosage Form & Strength:** Film Coated Tablet, Tramadol HCl 37,5 mg & Paracetamol 325 mg

Application name (number): PAINOGESIC CO

### Tabulated list of adverse reactions

System Organ Class	Adverse reaction	Frequency
Metabolism and nutrition disorders	hypoglycaemia	Frequency Unknown
Psychiatric disorders	confusional state, mood altered, anxiety, nervousness, euphoric mood), sleep disorders, anorexia	frequent
	depression, hallucinations, depersonalisation, nightmares, delirium, drug dependence, drug abuse, impotence,	Less frequent
Nervous system disorders	dizziness, somnolence, headache, trembling,	frequent
	involuntary muscular contractions, paraesthesia, amnesia, ataxia, convulsions, syncope, speech disorders	Less frequent
Eye disorders:	vision blurred, miosis, mydriasis	Less frequent
Ear and labyrinth disorders:	tinnitus	Less frequent
Blood disorders	Anaemia	Less frequent
Cardiac disorders:	palpitations, tachycardia, dysrhythmia	Less frequent
Gastro-intestinal disorders:	Nausea, vomiting, constipation, dry mouth, diarrhoea, abdominal pain, dyspepsia, flatulence	frequent
	Dysphagia , meleana	Less frequent
General disorders and administration site conditions	chills, chest pain, asthenia, fatigue, decreased weight	Less frequent
Investigations:	Transaminases increased	Less frequent
Renal and urinary disorders	albuminuria, micturition disorders (dysuria and urinary retention), oliguria	Less frequent
Respiratory, thoracic and mediastinal disorders	dyspnoea	Less frequent
Skin and subcutaneous tissue disorders	hyperhidrosis, pruritus	frequent
	dermal reactions (e.g. rash, urticaria).	Less frequent
	Fixed drug eruptions (FDE), Drug-induced hypersensitivity syndrome (DIHS)	Frequency unknown
Vascular disorders:	hypertension, aggravated hypertension, hot flush, hypotension	Less frequent

Although not observed during clinical trials, the occurrence of the following undesirable effects known to be related to the administration of tramadol or paracetamol cannot be excluded:

### **Tramadol**

Postural hypotension, bradycardia, collapse (tramadol).

- Post-marketing surveillance of tramadol has revealed rare alterations of warfarin effect, including elevation of prothrombin times.
- Cases of less frequent: allergic reactions with respiratory symptoms (e.g. dyspnoea, bronchospasm, wheezing, angioedema) and anaphylaxis
- Less frequent: Changes in appetite, motor weakness, and respiratory depression
- Psychic side-effects may occur following administration of tramadol which vary individually in intensity and nature (depending on personality and duration of medication). These include changes in mood, (usually euphoric mood occasionally dysphoria), changes in activity (usually suppression occasionally increase) and changes in cognitive and sensorial capacity (e.g. decision behaviour perception disorders).
- Worsening of asthma has been reported though a causal relationship has not been established.
- Symptoms of drug withdrawal syndrome, similar to those occurring during opiate withdrawal may occur as follows:  
Agitation, anxiety, nervousness, insomnia, hyperkinesia, tremor and gastrointestinal symptoms. Other symptoms that have been seen if tramadol hydrochloride is discontinued abruptly include: panic attacks, severe anxiety, hallucinations, paraesthesia, tinnitus and unusual CNS symptoms.

### **Paracetamol**

- Hypersensitivity including skin rash may occur. There have been reports of

**Applicant/PHCR:** *Innovata Pharmaceuticals (Pty) Ltd*

**Product Proprietary Name:** *PAINOGESIC CO*

**Dosage Form & Strength:** *Film Coated Tablet, Tramadol HCl 37,5 mg & Paracetamol 325 mg*

Application name (number): PAINOGESIC CO

blood dyscrasias including thrombocytopenia and agranulocytosis.

- There have been several reports that suggest that paracetamol may produce hypoprothrombinaemia when administered with warfarin-like compounds. In other studies, prothrombin time did not change.
- Cases of serious skin reactions have been reported.

### **Post Marketing experience**

The risk of fixed drug eruptions (FDE) and Drug-induced hypersensitivity syndrome (DIHS) has been associated with the use of paracetamol containing medicines.

### **Reporting of suspected adverse reactions**

Reporting suspected adverse reactions after authorisation of the medicine is important. It allows continued monitoring of the benefit/risk balance of the medicine. Healthcare providers are asked to report any suspected adverse reactions to SAHPRA via the “**6.04 Adverse Medicine Reactions Reporting Form**”, found online under SAHPRA’s publications: <https://www.sahpra.org.za/Publications/Index/8>

### **4.9 Overdose**

The clinical presentation of overdose may include the signs and symptoms of tramadol toxicity, paracetamol toxicity or both.

### **Tramadol**

The initial symptoms of tramadol overdose may include respiratory depression and/or seizures.

Primary attention should be given to maintaining adequate ventilation along with general supportive treatment. While naloxone will reverse some, but not all symptoms caused by overdose, the risk of seizures is also increased with naloxone administration. Treatment

**Applicant/PHCR:** Innovata Pharmaceuticals (Pty) Ltd

**Product Proprietary Name:** PAINOGESIC CO

**Dosage Form & Strength:** Film Coated Tablet, Tramadol HCl 37,5 mg & Paracetamol 325 mg

Application name (number): PAINOGESIC CO

of restlessness and / or convulsions is symptomatic and supportive (benzodiazepines/ barbiturates).

Tramadol is minimally eliminated from the serum by haemodialysis or haemofiltration.

Treatment of acute intoxication with **PAINOGESIC CO** with haemodialysis or haemofiltration alone is therefore not suitable for detoxification.

### **Paracetamol**

Prompt treatment is essential. In the event of an overdose, consult a medical practitioner immediately, or take the person to a hospital directly. A delay in starting treatment may mean that antidote is given too late to be effective. Evidence of liver damage is often delayed until after the time for effective treatment has lapsed.

Susceptibility to paracetamol toxicity is increased in patients who have taken repeated high doses (greater than 5 -10 g/day) of paracetamol for several days, in chronic alcoholism, chronic liver disease, AIDS, malnutrition, and with the use of drugs that induce liver microsomal oxidation such as barbiturates, isoniazid, rifampicin, phenytoin and carbamazepine.

Symptoms of paracetamol overdose in the first 24 hours include pallor, nausea, vomiting, anorexia and possibly abdominal pain. Mild symptoms during the first two days of acute poisoning do not reflect the potential seriousness of the overdose.

Liver damage may become apparent 12 to 48 hours or later after ingestion, initially by elevation of the serum transaminase and lactic dehydrogenase activity, increased serum bilirubin concentration and prolongation of prothrombin time.

Liver damage may lead to encephalopathy, coma and death.

Acute renal failure with acute tubular necrosis may develop even in the absence of severe liver damage.

Abnormalities of glucose metabolism and metabolic acidosis may occur. Cardiac dysrhythmias have been reported.

### **Treatment for paracetamol overdose:**

**Applicant/PHCR:** Innovata Pharmaceuticals (Pty) Ltd

**Product Proprietary Name:** PAINOGESIC CO

**Dosage Form & Strength:** Film Coated Tablet, Tramadol HCl 37,5 mg & Paracetamol 325 mg

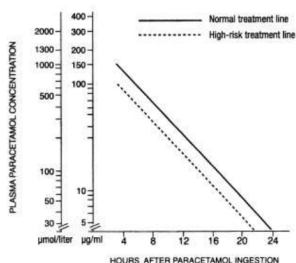
Application name (number): PAINOGESIC CO

N-acetylcysteine should be administered to all cases of suspected overdose as soon as possible preferably within eight hours of overdosage, although treatment up to 36 hours after ingestion may still be of benefit, especially if more than 150 mg/kg of paracetamol was taken. An initial dose of 150 mg/kg N-acetylcysteine in 200 mL dextrose injection given intravenously over 15 minutes, followed by an infusion of 50 mg/kg in 500 mL dextrose injection over the next four hours, and then 100 mg/kg in 1000 mL dextrose injection over the next sixteen hours. The volume of intravenous fluid should be modified for children.

Although the oral formulation is not the treatment of choice, 140 mg/kg dissolved in water may be administered initially, followed by 70 mg/kg every four hours for seventeen doses.

A plasma paracetamol level should be determined four hours after ingestion in all cases of suspected overdosage. Levels done before four hours, unless high may be misleading.

Patients at risk of liver damage, and hence requiring continued treatment with N-acetylcysteine, can be identified according to their plasma paracetamol overdose nomogram.



**Applicant/PHCR:** Innovata Pharmaceuticals (Pty) Ltd

**Product Proprietary Name:** PAINOGESIC CO

**Dosage Form & Strength:** Film Coated Tablet, Tramadol HCl 37,5 mg & Paracetamol 325 mg

Application name (number): PAINOGESIC CO

Those whose plasma paracetamol levels are above the “normal treatment line”, should continue N-acetylcysteine treatment with 100 mg/kg IV over sixteen hours repeatedly until recovery. Patients with increased susceptibility to liver damage as identified above, should continue treatment if concentrations are above the “high risk treatment line”. Prothrombin index correlates best with survival.

Monitor all patients with significant ingestions for at least ninety six hours.

## 5. PHARMACOLOGICAL PROPERTIES

### 5.1. Pharmacodynamic properties

A.2.9. Other analgesics,

Opioids in combination with non-opioid analgesics, tramadol and paracetamol.

ATC code: N02AJ13

Tramadol is a centrally acting synthetic analgesic compound whose analgesic profile can be attributed to the binding of parent and O-demethylated (M1) metabolite to  $\mu$ -opioid receptors as well as the weak inhibition of neuronal re-uptake of noradrenaline and serotonin. Paracetamol also has centrally acting analgesic effects

### 5.2. Pharmacokinetic properties

#### Absorption

Tramadol is well absorbed after oral administration, reaching peak activity in 2 to 3 hours.

The mean absolute bioavailability of a single 100 mg oral dose is approximately 75 %, increasing to approximately 90 % with multiple dosing. Oral absorption of paracetamol following administration of **PAINOGESIC CO** gives a peak plasma concentration of paracetamol within one hour and is not affected by co-administration with tramadol.

**Applicant/PHCR:** Innovata Pharmaceuticals (Pty) Ltd

**Product Proprietary Name:** PAINOGESIC CO

**Dosage Form & Strength:** Film Coated Tablet, Tramadol HCl 37,5 mg & Paracetamol 325 mg

Application name (number): PAINOGESIC CO

## **Distribution**

Tramadol has a high tissue affinity ( $V_{d, \beta} = 203 \pm 40$  L). It has a plasma protein binding of about 20 %.

Paracetamol appears to be widely distributed throughout most body tissues except fat. Its apparent volume of distribution is about 0.9 L/kg. A relatively small portion (~20 %) of paracetamol is bound to plasma proteins.

## **Metabolism**

Tramadol and paracetamol are both extensively metabolised in the liver.

## **Elimination**

Approximately 30 % of tramadol is excreted unchanged in the urine. Tramadol and its metabolites are eliminated primarily by the kidneys. The plasma elimination half-lives of tramadol and its M1 metabolite are approximately 6 and 7 hours respectively. Paracetamol is eliminated from the body primarily by formation of glucuronide and sulphate conjugates in a dose-dependent manner. The half-life of paracetamol is about 2 - 3 hours in adults. Less than 9 % of paracetamol is excreted unchanged in the urine.

## **6. PHARMACEUTICAL PARTICULARS**

### **6.1. List of excipients**

Colloidal silicon dioxide, maize starch, magnesium stearate, pre-gelatinised starch, sodium starch glycolate.

Film-coat: Opadry White Y-1-7000.

### **6.2. Incompatibilities**

Not applicable

### **6.3. Shelf life**

36 months

**Applicant/PHCR:** Innovata Pharmaceuticals (Pty) Ltd

**Product Proprietary Name:** PAINOGESIC CO

**Dosage Form & Strength:** Film Coated Tablet, Tramadol HCl 37,5 mg & Paracetamol 325 mg

Application name (number): PAINOGESIC CO

#### **6.4. Special precautions for storage**

Store in a cool, dry place, at or below 30 °C. protect from light and moisture.

#### **6.5. Nature and contents of container**

**PAINOGESIC CO** 37.5/325 mg is available in PVC/PVDC-Aluminium blister strip of 10 tablets per blister strip. Carton (Duplex Cardboard paper): 20 tablets per carton, 30 tablets per carton, 60 tablets per carton and 100 tablets per carton.

#### **6.6. Special precautions for disposal of a used medicine or waste**

**materials derived from such medicine and other handling of the product.**

Any unused product or waste material should be disposed of in accordance with local requirements.

### **7. NAME AND BUSINESS ADDRESS OF THE HOLDER OF THE CERTIFICATE OF REGISTRATION**

Innovata Pharmaceuticals (Pty) Ltd

Crownwood Office Park

100 Northern Parkway

Ormonde

Johannesburg

2091

South Africa

### **8. REGISTRATION NUMBER**

A 48/2.9/0774

### **9. DATE OF FIRST AUTHORISATION**

15 March 2022

### **10. DATE OF REVISION OF TEXT**

26 June 2023